

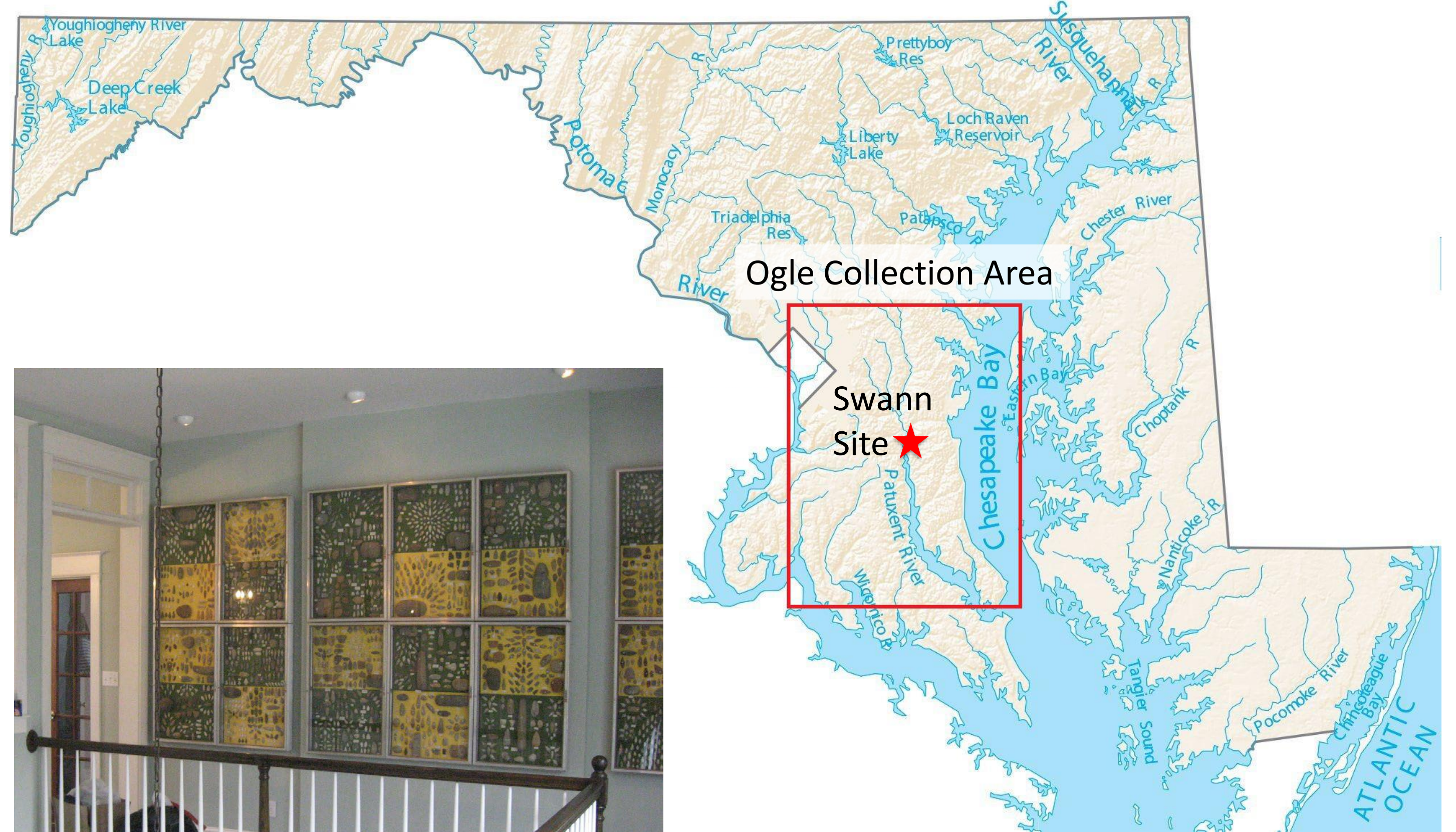


55,555 Artifacts from the Swann Site, Calvert County, Maryland

Andrew J. Webster, Anne Arundel County Cultural Resources Section

The Robert Ogle Collection

- Over 160,000 artifacts from 154 archaeological sites in Central and Southern Maryland – 150 boxes of material
- Donated to Anne Arundel County by the late surveyor and avocational archaeologist Robert (Bob) Ogle
- Cataloged with grant support from the Maryland Historical Trust.
- 30 new sites identified; updates to over 120 known sites
- Primarily native lithics/ceramics, also includes colonial-period artifacts

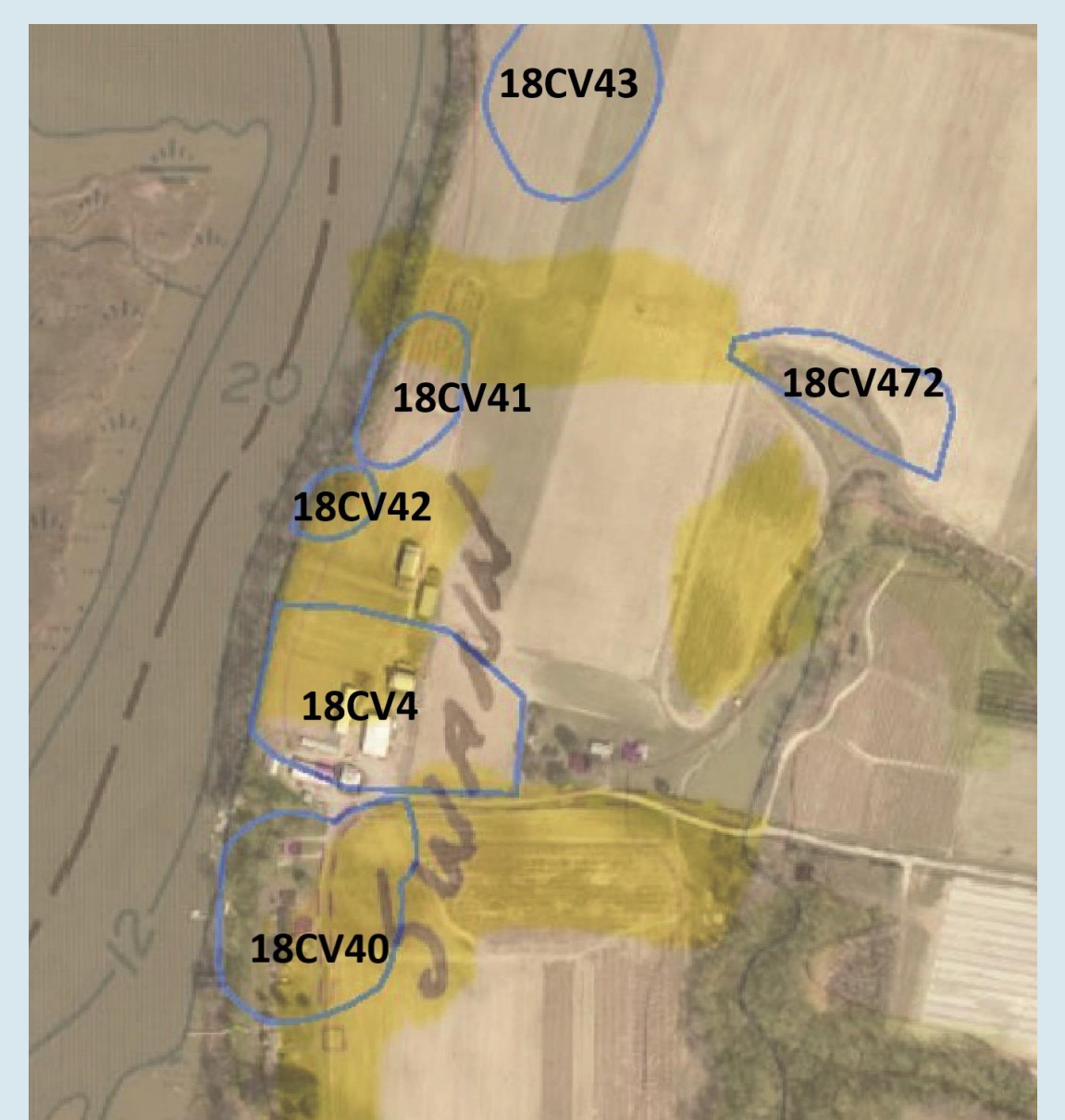


A portion of the Ogle Collection on display in Mr. Ogle's home

The location of Ogle's collection area and the Swann site within the state of Maryland

The Swann Site(s)

- Largest site assemblage in the Ogle Collection with 55,555 artifacts
- Now officially six sites; Ogle collected as a single site
- Ogle excavated Swann, but provenience information has been lost.
- Overlapping sites: 18CV4 (Native American: Paleo – Woodland) and 18CV40 (historic domestic occupation, c. 18th century)



Overlay of official site boundaries (blue) with Ogle's approx. collection area (yellow)

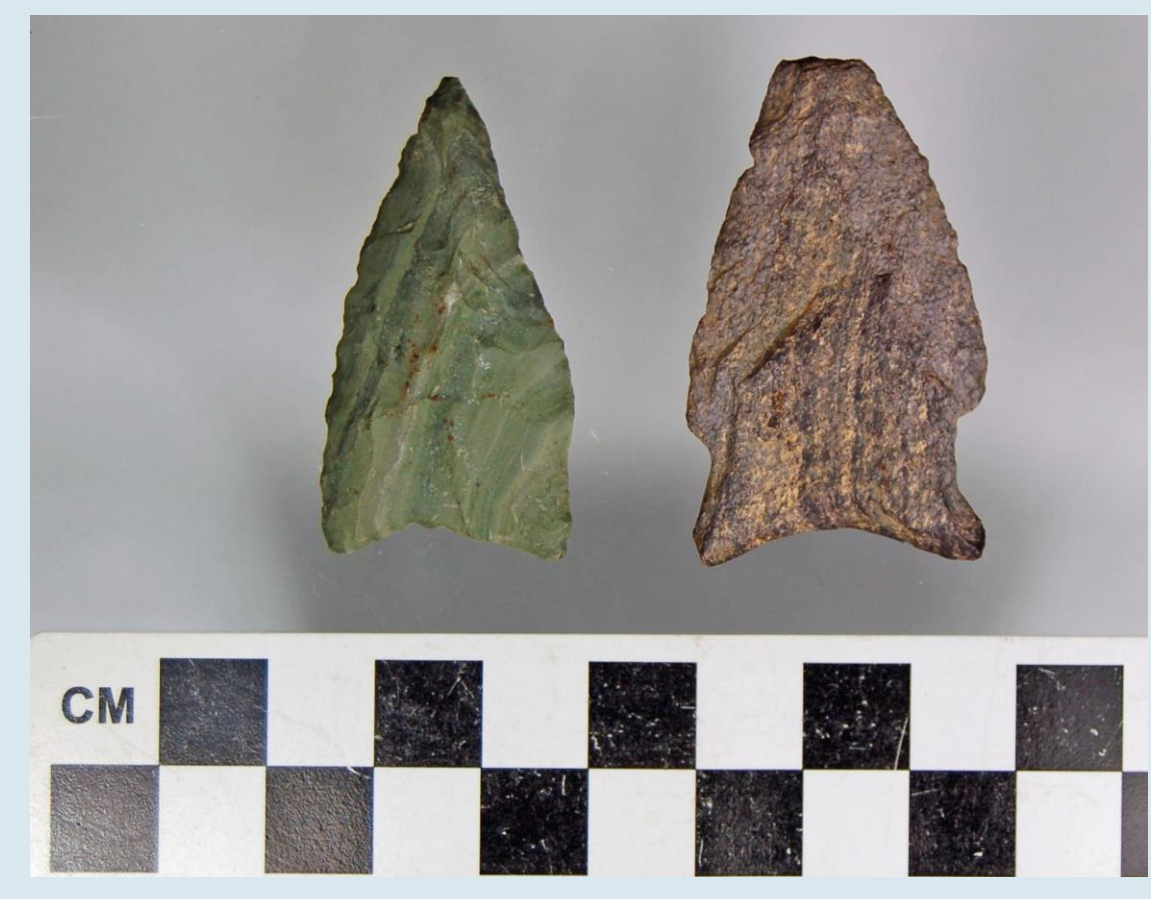
- Ogle believed this to be the location of the Tasker family plantation.
- He reportedly discovered tombstone fragments bearing the Tasker name and a spoon with initials.

"This guy was rich. Thomas Tasker was the first one on the property, followed by Benjamin Tasker. John followed him."

-Robert Ogle, interviewed by Wayne Clark, 1998

Lithics

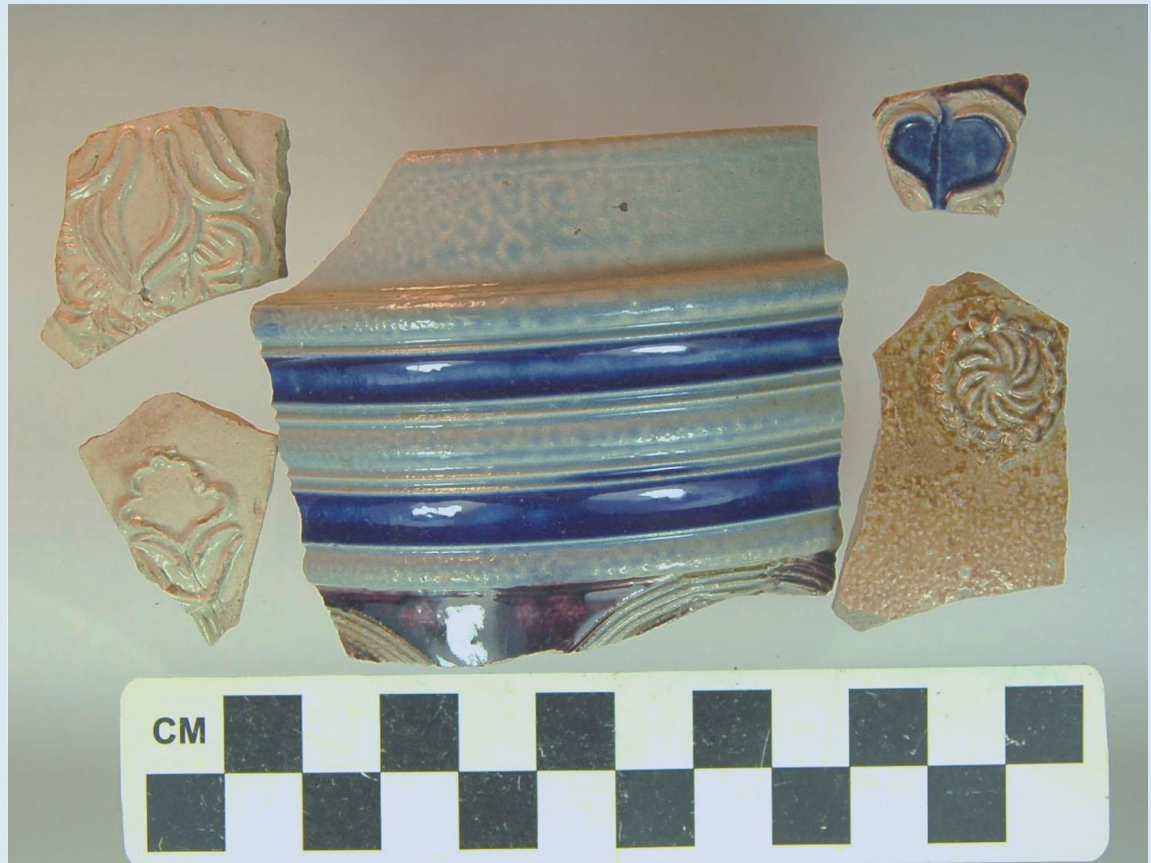
- N = 3,931
- 246 points including 2 Paleo points
- All periods of Archaic and Woodland represented
- Ground stone tools
- 1,393 pieces of gunflint (English, likely ballast, and French, complete)



Carolina slate Hardaway Dalton (L), rhyolite Hardaway Side-Notched (R)

Historic Ceramics

- N = 17,290
- Colonial-era is most common, incl. European stoneware, Chinese porcelain, and coarse earthenware.
- Post-colonial period represented by refined earthenware (n = 2,284) and domestic stoneware (n = 853)



Rhenish stoneware

Glass

- N = 8,220
- Olive bottle glass (n = 5,653) including 1,431 wine bottle bases
- 602 aqua bottle fragments
- 57 beads with 13+ decorative styles, likely Venetian trade beads



Glass beads

Tobacco Pipes

Bore Diam.	Peak Use	Pipe Count
9/64"	1590-1620	1
8/64"	1620-1650	25
7/64"	1650-1680	468
6/64"	1680-1720	3,990
5/64"	1720-1750	8,772
4/64"	1750+	1,837
Total pipe fragments		15,093



Marked tobacco pipes

Metal

- N = 5,965
- 4,971 iron nails, including 4,218 wrought nails, = large 17th-18th century structure(s) on the site
- Buttons and buckles (n = 130)
- Hardware (n = 107)
- Shell casings (n = 47)
- Tableware (n = 33)
- Tools (n = 22)
- Leather ornaments (n = 12)
- Horse furniture (n = 11)
- Bale seals (n = 2)
- Coins: 1680 shilling, possible Spanish coin



Interns Harrison Biggs and Kari Maygers sorting iron nails

Calling All Researchers!

- The collection is cataloged and awaits your specialized analyses!
- Ideal for theses, dissertations, and collections research
- Contains nearly all artifact classes and time periods
- Possible topics include settlement patterns, lithic raw material preferences, comparative studies, & material culture research.
- Contact the author at pzwebs00@aacounty.org

Acknowledgements

- Robert Ogle
- Amelia Chisholm
- Shawn Sharpe
- Zachary Singer
- Suzi Webster
- Sarah Janesko
- Ray Narvaez
- Harrison Biggs
- Heather McKee
- Kari Maygers
- Claire Gross
- Nicole Six
- AA County Cultural Resources Colleagues
- LTP Volunteers

